

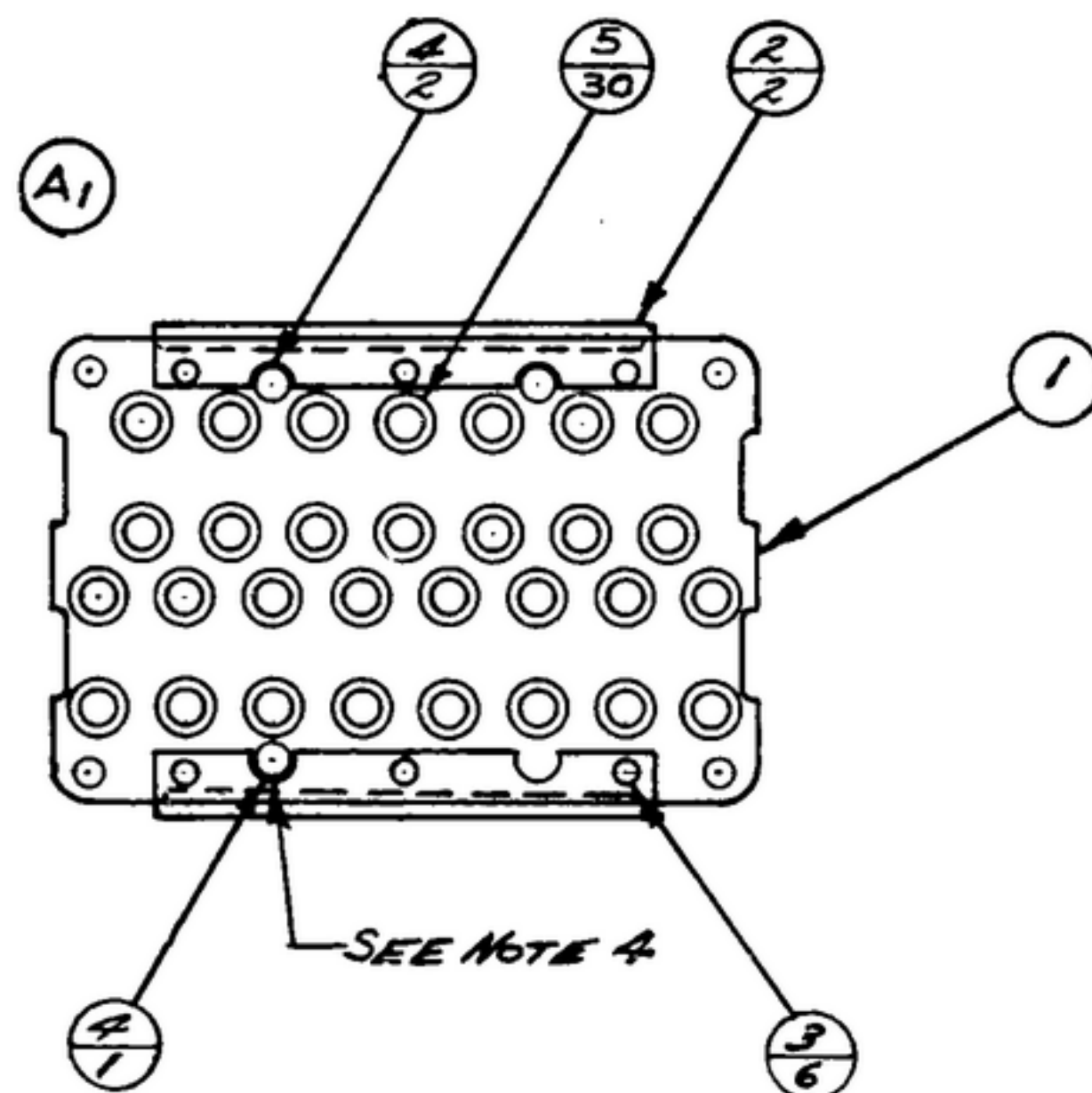
NOTICE: WHEN GOVERNMENT DRAWINGS, SPECIFICATIONS, OR OTHER DATA ARE USED FOR ANY PURPOSE OTHER THAN IN CONNECTION WITH A DEFINITELY RELATED GOVERNMENT PROCUREMENT OPERATION, THE UNITED STATES GOVERNMENT THEREBY INCURS NO RESPONSIBILITY FOR ANY OBLIGATION WHATSOEVER AND THE FACT THAT THE GOVERNMENT MAY HAVE FORMULATED, FURNISHED, OR IN ANY WAY SUPPLIED THE SAID DRAWINGS, SPECIFICATIONS, OR OTHER DATA IS NOT TO BE REGARDED AS IMPLICATION OR ENDORSEMENT AS IN ANY BARRING LICENSE THE HOLDER OF ANY OTHER PATENT OR COPYRIGHT, OR OBTAINING ANY RIGHTS OR PERMISSION TO MANUFACTURE, USE, OR SELL ANY PATENTED INVENTION THAT MAY IN ANY WAY BE RELATED THEREBY.

THIS DOCUMENT HAS BEEN PURCHASED BY THE GOVERNMENT AND MAY BE REPRODUCED AND USED IN CONNECTION WITH ANY GOVERNMENT PROCUREMENT OR MAINTENANCE OPERATION.

* FOR INFORMATION ONLY. CONTRACTOR MAY AT HIS OPTION DEVIATE FROM THESE PROCESS DETAILS.

~~*SWE APPROVAL~~
~~SYM PR10042-B~~

REVISIONS			
SYM	DESCRIPTION	DATE	APPROVAL
A ₁	A ₁ -CORRECTED VIEW OF ITEM 2 TO AGREE WITH DETAIL DRG. SM-B-249027.	27 OCT. 59	42428-PC-59-AI-51 REV'D PME



- NOTES:
1. PRESS CONNECTORS (5) INTO BOARD (1), SNUG AGAINST SHOULDER FROM SIDE SHOWN.
 2. PRESS TERMINALS (4) INTO BOARD (1), SNUG AGAINST SHOULDER FROM OPPOSITE SIDE SHOWN.
 3. ROLL SPRINGS (2) TO BOARD (1) USING RIVETS (3). HEADS OF RIVETS TO BE ON SIDE SHOWN.
 4. CLIP APPROX. 1/16 FROM END OF TERMINAL (4) AS NOTED.
 5. IN ALL SPLIT BALLOONS TOP FIGURE IS MATERIAL LIST ITEM INDICATOR & BOTTOM FIGURE IS QUANTITY.

559 0285 002	5	30	SM-B-283184	CONNECTOR-RECEPTACLE			1
559 0223 002	4	3	SM-B-249269	TERMINAL-INSULATED			2
559 0218 002	3	6	SM-B-249264	RIVET-TUBULAR			3
558 0377 002	2	2	SM-B-249027	SPRING-CONTACT			
558 0369 002	1	1	SM-B-249019	BOARD-CRYSTAL RET.			
COLLINS PART NO.	ITEM	REQD	PART NO.	DESCRIPTION	MATL.	MATL. SPEC	NOTES

LIST OF MATERIAL COLLINS PART NO. ~~558 0379 002~~

COLLINS NO.	QTY	NEXT ASSY	USED ON
558 0308 002	1	SM-B-249027	5-DL248775

DRAWN HENRY CHECKED Rhn APPROVED _____

UNLESS OTHERWISE SPECIFIED:
 DECIMAL DIMENSIONS INCLUDING HOLE SIZES MAY VARY ±.008
 FRACTIONAL DIMENSIONS INCLUDING HOLE SIZES MAY VARY ±1/64
 MACHINED ANGLES MAY VARY ±.1°
 SHEARED ANGLES MAY VARY ±.25°
 BROKEN ANGLES MAY VARY ±.1°
 ECCENTRICITY BETWEEN ANY DIAMETERS ON THE SAME CENTERLINE SHALL NOT EXCEED .010 TOTAL INDICATOR READING.
 ALL DIMENSIONS ARE FINISH DIMENSIONS INCLUDING APPLIED FINISH AND ARE GIVEN IN INCHES.

COLLINS-RADIO-CO.
 -SEAR-RAPIDS-10WA-
 14214-P.H
 51-93

SIGNAL CORPS

REVIEWED PME

APPROVED HLV
PME

DATE 15 Dec 55 SCALE 1/1

DEPARTMENT OF THE ARMY
 SIGNAL CORPS ENGINEERING
 LABORATORIES

FORT MONMOUTH NEW JERSEY

SM-B-249029